

# Specifications and Ordering Information

## FieldMonitor™ Configuration Software for RSLogix5™

### Description

The FieldMonitor™ Configuration Software for RSLogix5™ is a software package developed by Bently Nevada to configure the FieldMonitor™ system and view data from the FieldMonitor™ system **only** when using an Allen-Bradley (A-B) PLC-5™ controller with RSLogix5™ Configuration Software. RSLogix5 software is the Rockwell Automation software used to configure a PLC-5 controller. The FieldMonitor Configuration Software for RSLogix5 can be used where the industrial network between the PLC-5 and the FieldMonitor is either ControlNet or A-B Remote I/O.

When using FieldMonitor™ Configuration Software for RSLogix5, FieldMonitor configuration options are selected by clicking in the desired boxes or typing in a value from a windows-based screen within RSLogix5. See example configuration screen capture.

Two software options are available for use with the FieldMonitor System and RSLogix5:

1. User package - used by end-users to configure their own FieldMonitor Systems.
2. Integrator package - used by system integrators to configure the FieldMonitor Systems for their customers.

**Note:** This software can only be used with PLC-5 controllers and RSLogix5 software. FieldMonitor can be used with many other controllers. For more information on the data structures to integrate FieldMonitor with these products contact Bently Nevada.

---

### Specifications

---

#### Computer Requirements

- Pentium, Pentium-compatible, or 486 microprocessor
- 32 MB or more of RAM
- SVGA color monitor
- 2 MB of unused hard disk space
- 3.5" 1.44 MB floppy disk drive (for installation)
- Microsoft Windows 95 or NT 4.0, or later operating systems
- The following Rockwell Software Inc. products must be installed on the computer before you install the 1701 software: RSLogix, RSLinx, and RSNetworx for ControlNet (if you are using ControlNet).

---

## Ordering Information

### FieldMonitor Configuration Software for RSLogix5™ \* 1701/01-XX

#### Option Descriptions

Note: \* 1701/01-01 and -02 options include 1701/20-01 one-year single package support agreement.

<i>A: Software</i>	<b>01</b>	User Package
<i>packages</i>	<b>02</b>	Integrator Package

### Technical Support Agreements

#### 1701/20-XX

#### Option Descriptions

<i>A: Support</i>	<b>01</b>	1-year single package technical support agreement
<i>Agreements</i>	<b>02</b>	1-year multiple package technical support agreement
	<b>03</b>	2-year single package technical support agreement
	<b>04</b>	2-year multiple package technical support agreement
	<b>05</b>	3-year single package technical support agreement
	<b>06</b>	3-year multiple package technical support agreement
	<b>07</b>	4-year single package technical support agreement
	<b>08</b>	4-year multiple package technical support agreement
	<b>09</b>	5-year single package technical support agreement
	<b>10</b>	5-year multiple package technical agreement

© 1999 Bently Nevada Corporation

® used in this document are registered marks of Bently Nevada Corporation  
RSLogix5™ and 6200 Series Software are trademarks of Rockwell Software, Inc.  
ControlNet™ is a trademark of ControlNet International

® PLC is a registered trademark of the Allen-Bradley Company, Inc.

# Screen Capture

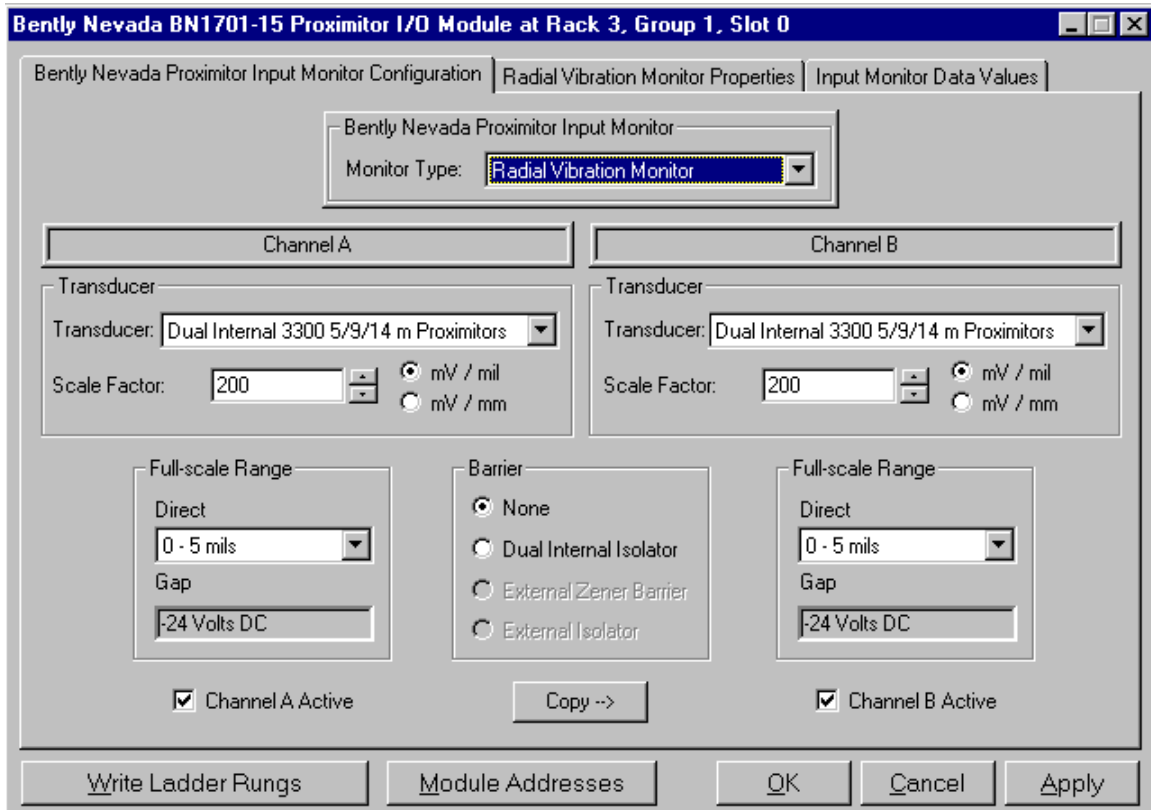


Figure 1: Sample Configuration Screen