

Specifications and Ordering Information

FieldMonitor™ Configuration Software for RSLogix5000™

Description

The FieldMonitor™ Configuration Software for RSLogix5000™ is a software package developed by Bently Nevada to configure the FieldMonitor™ system **only** when using an Allen-Bradley (A-B) ControlLogix™ controller with RSLogix5000™ and RSNetworkx for ControlNet™ Software. RSLogix5000 software is the Rockwell Automation software used to program and configure a ControlLogix controller and RSNetworkx for ControlNet is software used to configure and map a ControlNet™ network. The FieldMonitor Configuration Software for RSLogix5000 can be used only when the industrial network is ControlNet.

When using FieldMonitor™ Configuration Software for RSLogix5000, the EDS files (Electronic Data Sheet) must first be installed in RSNetworkx for ControlNet. FieldMonitor configuration options are selected from within RSLogix5000 by adding FieldMonitor modules in the I/O Configuration beneath an A-B 1794 ControlNet adapter. See example configuration screen capture.

Several software options are available with the software:

1. User package - used by end-users to configure their own FieldMonitor Systems.
2. OEM package - used by system integrators to configure the FieldMonitor Systems for their customers.

Note: This software can only be used with ControlLogix controllers and RSLogix5000 software. FieldMonitor can be used with many other controllers. For more information on the data structures to integrate FieldMonitor with these products contact Bently Nevada.

Specifications

Computer Requirements

- Most computer requirements are dependant on the RSLogix5000 version used. Contact Rockwell Software, Inc. for your system requirements.
- 2 MB of unused hard disk space
- 3.5" 1.44 MB floppy disk drive (for installation)
- The following Rockwell Software Inc. products must be installed on the computer before you install the 1701 software: RSLogix5000, RSLinx, and RSNetworkx for ControlNet.

Ordering Information

FieldMonitor Configuration Software for RSLogix5000™ * 1701/02-XX

Option Descriptions

Note: * 1701/02-01 option includes 1701/20-01 one-year single package support agreement (TSP). 1701/02-02 option includes a 1-year OEM package support agreement (TSP). 1701/02-11 option includes a 5-year OEM package support agreement (TSP)

<i>A: Software packages</i>	0 1	Single User Package 1-year TSP
	0 2	One Site OEM 1-year TSP
	1 1	One Site OEM 5-year TSP
	5 1	Software Update

Technical Support Agreements

1701/20-XX

Option Descriptions

<i>A: Support Agreements</i>	0 1	Single User, 1 Year Support
	0 2	OEM 1 Location, 1 Year Support
	0 9	Single User, 5 Year Support
	1 0	OEM 1 Location, 5 Year Support

© 2001, 2003 Bently Nevada LLC

® used in this document are registered marks of Bently Nevada LLC
RSLogix5000™ and RSNetwork for ControlNet™ Software are trademarks of Rockwell Software, Inc.
ControlNet™ is a trademark of ControlNet International
® PLC is a registered trademark of the Allen-Bradley Company, Inc.

Screen Capture

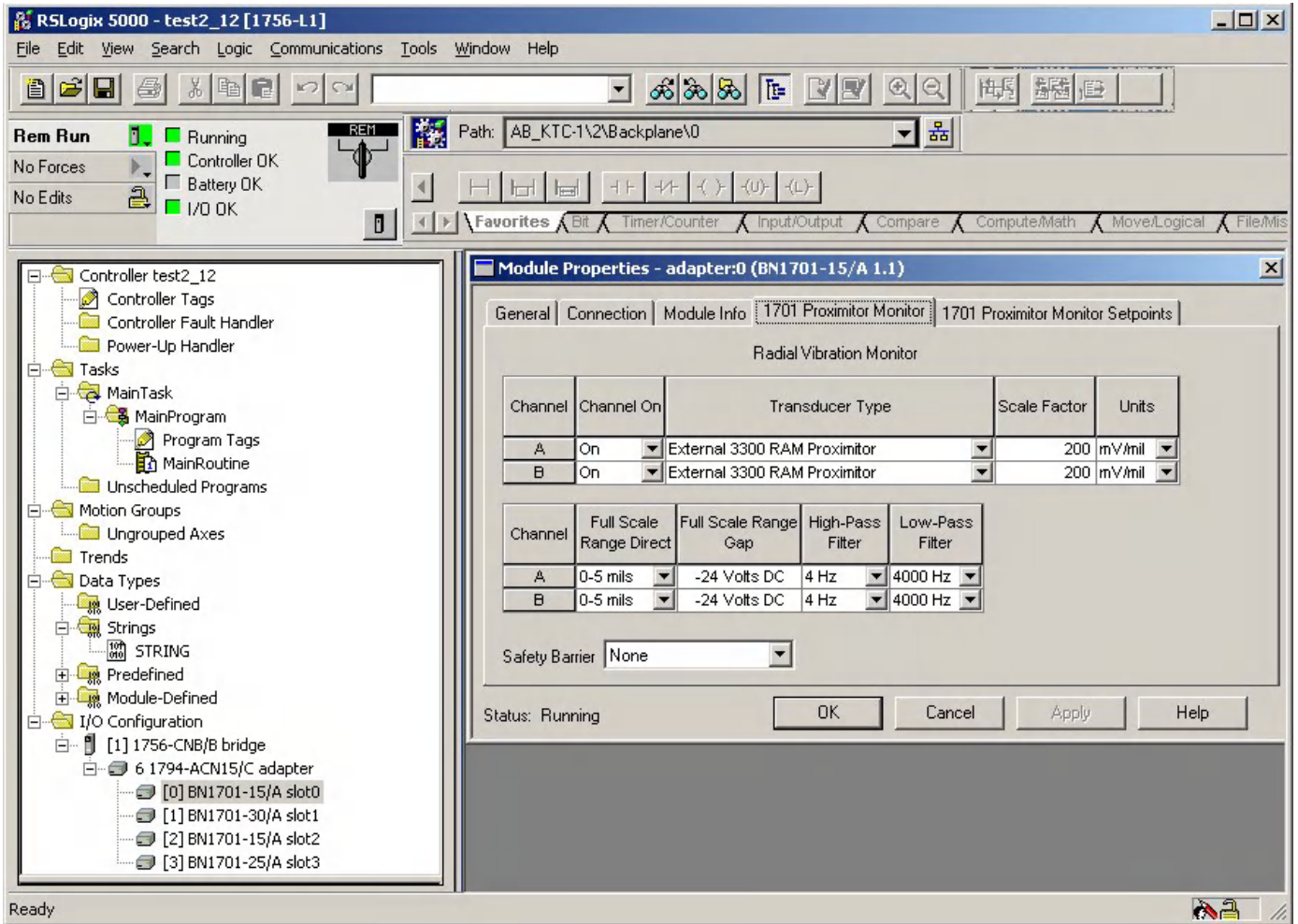


Figure 1: Sample 1701/02 Configuration Screen