



### EEx d Enclosures in Light Metal Flameproof Encapsulation Series 8265

- International certification
- Flexible modular design for combining enclosures
- For use in Zone 1 and Zone 2
- 4 enclosure sizes
- Glass windows optional
- Entry method direct and indirect

STAHL

The enclosures are used to build motor starters, control stations and terminal boxes. Furthermore they are suitable for measuring equipment and customer specific control units. By using this technology the installation of sparring and arcing equipment in a Zone 1 or a Zone 2 application is enabled. Therefore just standard industrial electrical components are used. This equipment is engineered and wired according to customer's requirement. Optionally the enclosure can be mounted in an "Increased Safety" control panel as module for lighting and heating distribution panels. The design of the enclosure is optimised for:

- simple installation and commissioning
- efficient maintenance

This is achieved by the big cover opening. Therefore the complete mounting slot for the electrical components is freely accessible. Covers with windows and O-Ring seals together with mounting plates and DIN rails are available to complete the series of enclosures.

For direct cable entry flameproof cable glands or threaded entries for direct conduit connection can be applied. For indirect cable entry connection chambers - type 8146 and 8125 - come into use.

# Zones 1 & 2




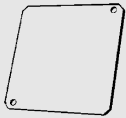
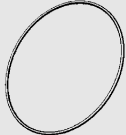
Selection table				
Version	Total dimensions LxWxH [mm]	Description	Ordering code	Weight kg
Size 2	155 x 155 x 132	Empty enclosure without window	<b>8265/02-000</b>	4,200
		Empty enclosure with window	<b>8265/02-001</b>	4,400
Size 3	195 x 195 x 172	Empty enclosure without window	<b>8265/03-000</b>	6,800
		Empty enclosure with window	<b>8265/03-001</b>	7,300
Size 4	236 x 236x 227	Empty enclosure without window	<b>8265/04-000</b>	11,300
		Empty enclosure with window	<b>8265/04-001</b>	12,000
Size 6	335 x 335 x 275	Empty enclosure without window	<b>8265/06-000</b>	27,800
		Empty enclosure with window	<b>8265/06-001</b>	28,800

Typical combinations of Ex d enclosures 8265 with connection chambers 8146 or 8125				
Ex d enclosures	Connection chambers in moulded plastic		Connection chambers in sheet steel or stainless steel	
	Connection chamber	via spacer	Connection chamber	via spacer
8265/02-... Size 2	8146/.031	Size 0	8125/.041	Size 0
	8146/.041	Size 0		
8265/03-... Size 3	8146/.041	Size 1	8125/.041	Size 1
	8146/.051	Size 1		
	8146/.061	Size 1		
	8146/.071	Size 1		
8265/04-... Size 4	8146/.073	Size 3	8125/.073	Size 3
	8146/.083	Size 3		
	8146/.093	Size 3		
8265/06-... Size 6	8146/.073	Size 2	8125/.073	Size 2
	8146/.083	Size 2		
	8146/.093	Size 2		

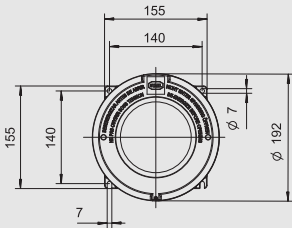
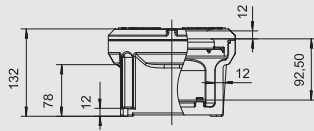
Technical Data	
<b>Version</b>	<b>Series 8265</b>
Explosion protection	⊕ II 2G Ex d IIC T4 ... T6
Certificates	PTB 06 ATEX 1023 U PTB 06 ATEX 1076 U PTB 06 ATEX 1077
Other certificates	IECEX, UL
Rated operational voltage U <sub>e</sub>	Standard: Max. 1100 V Option: bis 10 kV
Rated working current I <sub>e</sub>	Enclosure Current Size 2 max. 160 A Size 3 Size 4 Size 6 max. 250 A
Degree of protection	IP 54 IP 66 (with additional O-gasket)
Housing	aluminium, copper free (saltwater-proof)

## Technical Data

Power loss and temperature class	Enclosure	<b>for ambient temperature 40 °C</b>							
		T6	T5						
	Size 2	30 W	45 W						
	Size 3	43 W	63 W						
	Size 4	62 W	93 W						
		<b>for ambient temperature 55°C</b>							
		T6	T5						
		Size 2	18 W	30 W					
		Size 3	26 W	43 W					
		Size 4	35 W	62 W					
Maximal number of drillings	Maximal number of metrical drillings at each side								
	Enclosure	M 20	M 25	M 32	M 40	M 50	M 63	M 75	
	Size 2	3	2	2	1				
	Size 3	8	4	3	2	1	1	1	
	Size 4	16	9	6	4	3	1	1	
Maximal number of conduit drillings	Maximal numbers of Conduit-drillings at each side								
	Enclosure	1/4"	3/8"	1/2"	3/4"	1"	1 1/4"	1 1/2"	2"
	Size 2	8	8	4	3	2	2	1	-
	Size 3	16	16	9	6	5	3	2	1
	Size 4	36	36	18	16	9	6	5	3
<b>Version</b>	<b>EEx e enclosure 8146</b>								
Explosion protection	⊕ II 2 G EEx edmq ia / ib [ja / ib] IIA, IIB resp. IIC T6, T5 resp. T4								
Certificates	PTB 01 ATEX 1024								
Other certificates	IECEX								
Material									
Housing	Polyester resin, glass fibre-reinforced, dark grey, similar to RAL 7024, impact strenght ≥ 7 Nm, surface resistance ≤ 10 <sup>9</sup> Ohm, material flame resistant, self-extinguishing								
Gaskets	Polyurethane, foam								
Degree of protection	IP 66 (dependent on equipment installed)								
Rated working voltage	max. 1100 V (dependent on equipment installed)								
Rated working current I <sub>e</sub>	max. 630 A								
<b>Version</b>	<b>EEx e enclosure 8125</b>								
Explosion protection	⊕ II 2 G EEx edmq [ja/ib] IIA resp. IIB T6, T5 resp. T4								
Certificates	PTB 01 ATEX 1001								
Other certificates	IECEX								
Material									
Housing	dependent on version selected: sheet steel, glavanized; painted light grey, RAL 7032 or stainless steel without paint (paint finish can be ordered)								
Gaskets	Polyurethane, foam								
Degree of protection	IP 66 (dependent on equipment installed)								
Rated working voltage	max. 1100 V (dependent on equipment installed)								
Rated working current I <sub>e</sub>	max. 630 A								

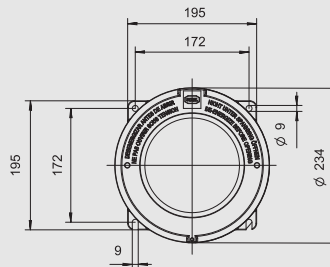
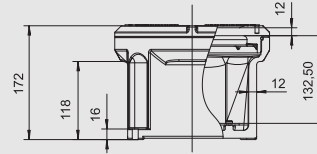
Accessories and spare parts			
Designation	Illustration	Ordering code	
Cover with window		for enclosure: Size 2 Visible part of window 107 mm	826500050020
		for enclosure: Größe 3 Visible part of window 143 mm	826500050030
		for enclosure: Size 4 Visible part of window 191 mm	826500050040
Mounting plate		for enclosure size 2	826590550020
		for enclosure size 3	826590550030
		for enclosure size 4	826590550040
O-Ring		for enclosure size 2	5156550
		for enclosure size 3	5156560
		for enclosure size 4	5156570
Drain and breather valve		with thread 3/8"	4607270
		with thread 1/2"	4607280
Terminal rail		TS35 for enclosure size 3	8146954980
		G32 for enclosure size 3	8146949980
		TS15 for enclosure size 3	8146942980
		TS35 for enclosure size 4	8146955980
		G32 for enclosure size 4	8146950980
		TS15 for enclosure size 4	8146943980

Dimension drawings (all dimensions in mm) - subject to alterations



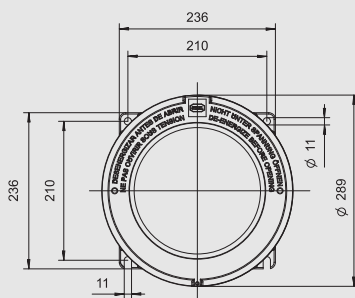
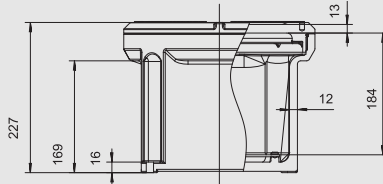
11399E00

**Enclosure size 2**  
8265/02-...



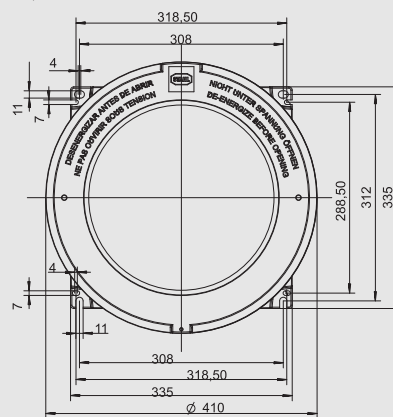
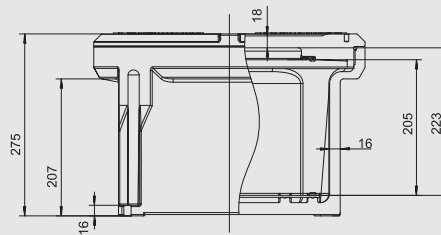
11397E00

**Enclosure size 3**  
8265/03-...



11398E00

**Enclosure size 4**  
8265/04-...

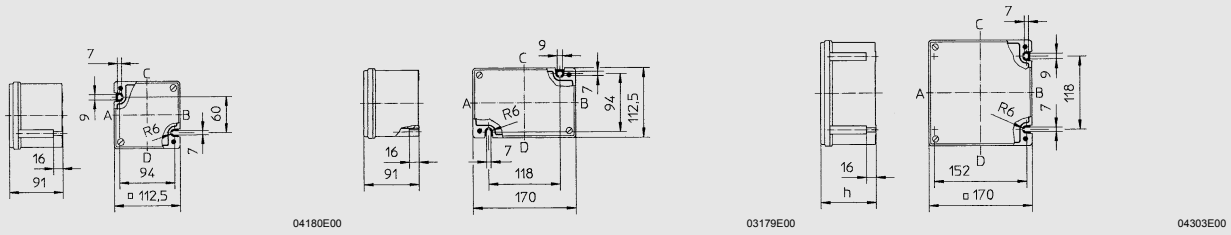


11396E00

**Enclosure size 6**  
8265/06-...

**Enclosure Series 8265**

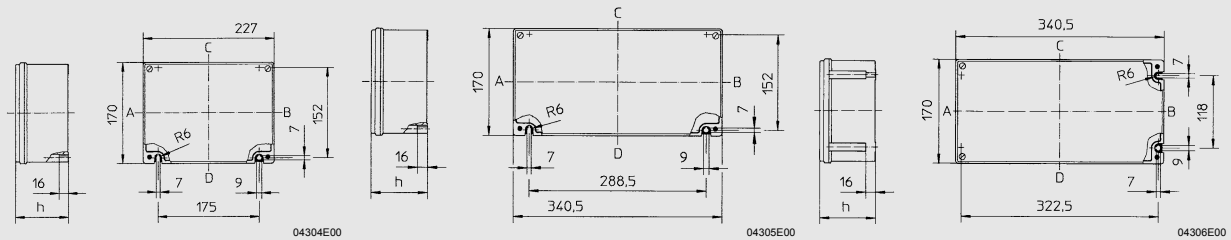
Dimension drawings (all dimensions in mm) - subject to alterations



8146/03.

8146/04.

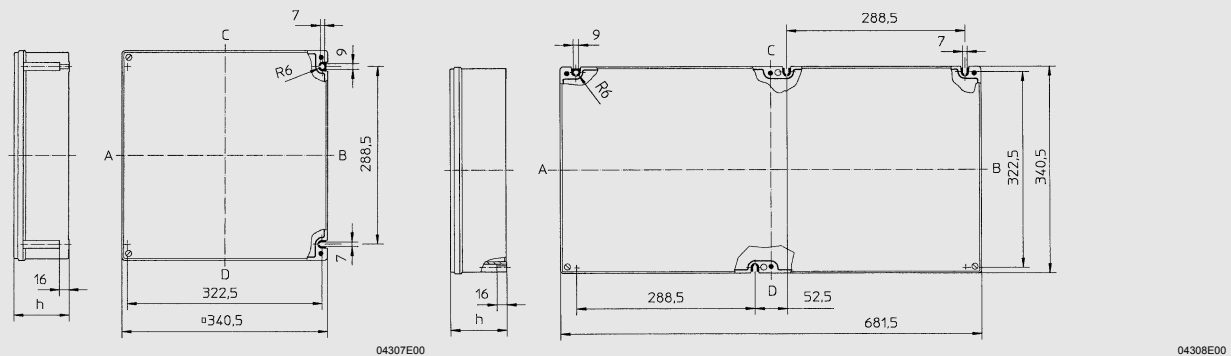
8146/05.



8146/06.

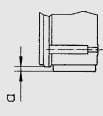
8146/07.

8146/S7.



8146/08.

8146/09.



04309E00

Flange thickness [mm]	Dimension a [mm]
2.8	7
5.8	10

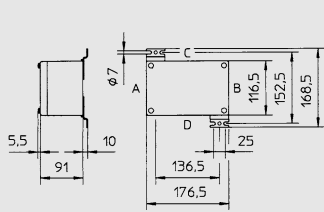
Additional dimensions for flange mounting

Enclosure	Height of enclosure h				
	8146/...1 91 mm	8146/...2 131 mm	8146/...3 150 mm	8146/...5 190 mm	8146/...6 230 mm
8146/03.	X	-	-	-	-
8146/04.	X	-	-	-	-
8146/05.	X	X	-	-	-
8146/06.	X	X	-	-	-
8146/07.	X	X	X	X	-
8146/S7.	X	-	X	-	-
8146/08.	X	X	X	X	X
8146/09.	X	X	X	X	-

X ... can be supplied

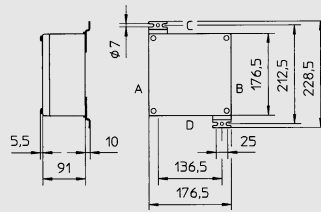


### Dimension drawings (all dimensions in mm) - subject to alterations



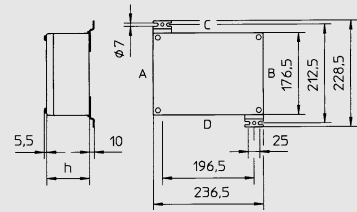
04554E00

**8125/04.**



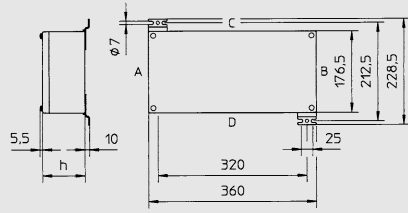
04555E00

**8125/05.**



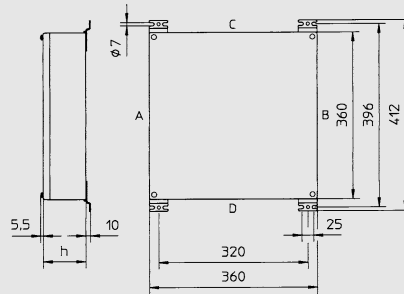
04556E00

**8125/06.**



04557E00

**8125/07.**



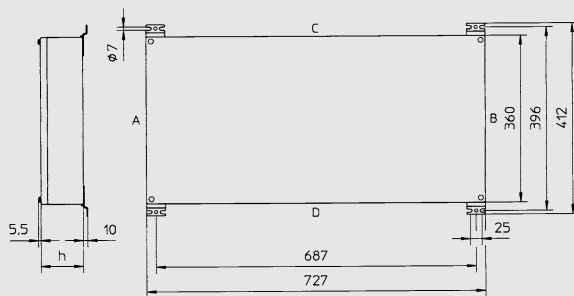
04558E00

**8125/08.**



04560E00

Additional dimension  
for flange



04559E00

**8125/09.**

Enclosure	Hight of enclosure h			
	8125/...1 91 mm	8125/...3 150 mm	8125/...5 190 mm	8125/...6 230 mm
8125/04.	X	-	-	-
8125/05.	X	-	-	-
8125/06	X	X	-	-
8125/07.	X	X	-	-
8125/08.	X	X	X	X
8125/09.	X	X	X	-

X ... can be supplied

STAHL

We reserve the right to make alterations to the technical data, weights, dimensions, designs and products available without notice. The illustrations cannot be considered binding.