



10019E00

### Control Unit Series 8453/1 and 8453/2

- Explosion protection to
  - CENELEC
  - IEC
- For use in Zone 1 and Zone 2
- The control unit with resistor is equipped with
  - 1 resistor 1 kΩ / 1 W or
  - 1 resistor 10 kΩ / 1 W
- Depending on the order, the control units Series 8453 can be equipped with
  - fuses
  - varistors
  - diodes
  - capacitors
  - and other electrical / electronic components

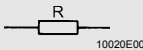
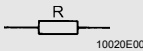
STAHL

The control units with resistor Series 8453 are used mostly for monitoring wire break and short circuits. The enclosure is the same as control elements Series 8082.





Similar to control elements Series 8082, versions with screw terminals and spring clamp terminals are also available.

# Zones 1 & 2

**Selection Table**

Version	Description	Order number	Weight kg
Control unit with screw terminal Series 8453/1	 Resistor 1 kΩ / 1 W	<b>8453/1-03-001</b>	0.050
	Resistor 10 kΩ / 1 W	<b>8453/1-03-002</b>	0.050
Control unit with spring clamp terminal Series 8453/2	 Resistor 1 kΩ / 1 W	<b>8453/2-03-001</b>	0.050
	Resistor 10 kΩ / 1 W	<b>8453/2-03-002</b>	0.050

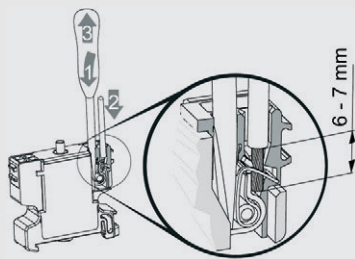
**Technical Data**

Version	with resistor 1 kΩ / 1 W	with resistor 10 kΩ / 1 W
Explosion protection	 II 2 G Ex de IIC  I M 2 Ex de I	 II 2 G Ex de II  I M 2 Ex de I
Certificates	PTB 01 ATEX 1067 U	PTB 01 ATEX 1067 U
Other certificates	IECEX, Belarus (Promatomnadzor)	IECEX, Belarus (Promatomnadzor)
Enclosure material	Polyamide	Polyamide
Rating	1 W	1 W
Connection cross-section		
finely-stranded	2.5 mm <sup>2</sup>	2.5 mm <sup>2</sup>
Ambient temperature	- 20 °C ... + 40 °C	- 20 °C ... + 40 °C

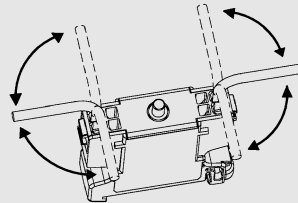
**Handling of the Conductor Connection as a Part of 8453/1**

With element types 8453/1 (screw terminal), 1 and 2 conductors can be installed under a conductor connection. With one wired conductors, the conductors must have the same kind of cross section and be made of the same material. Conductors can be connected without any kind of special preparation.

**Handling of the Conductor Connection as a Part of 8453/2**



05885E00



05886E00

**Usable Copper Connectors**



solid

09178E00



stranded

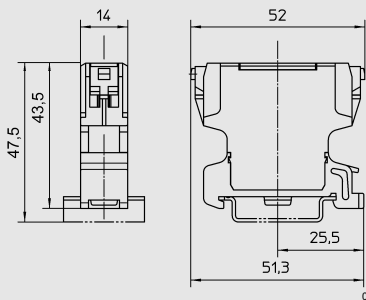
09188E00



finely-stranded

09189E00

**Dimensional Drawings (All Dimensions in mm) - Subject to Alterations**



04743E00

Control unit with resistor 8453/1-03-00.

We reserve the right to make alterations to the technical data, weights, dimensions, designs and products available without notice. The illustrations cannot be considered binding.

