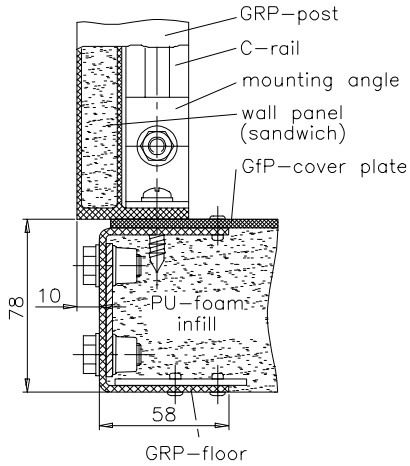
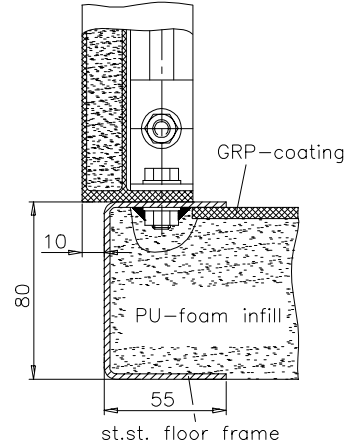


Floor versions for CLASSIC series

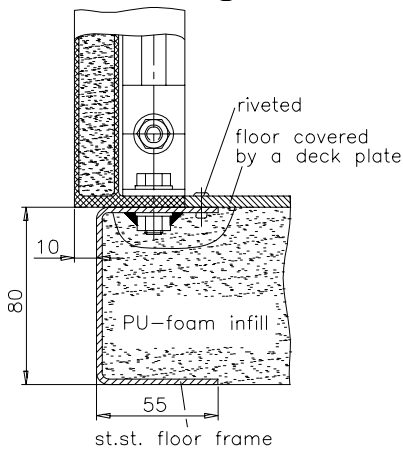
Design A



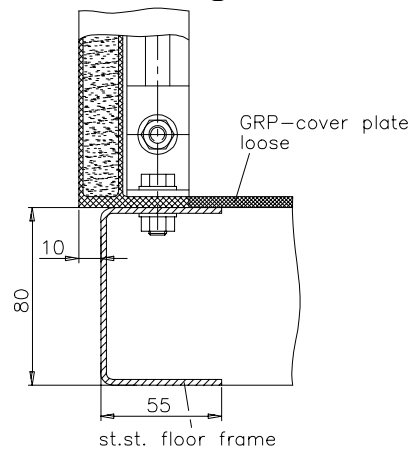
Design B



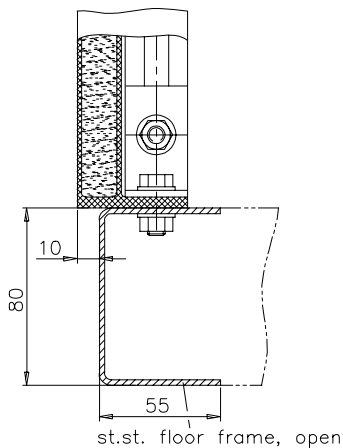
Design C



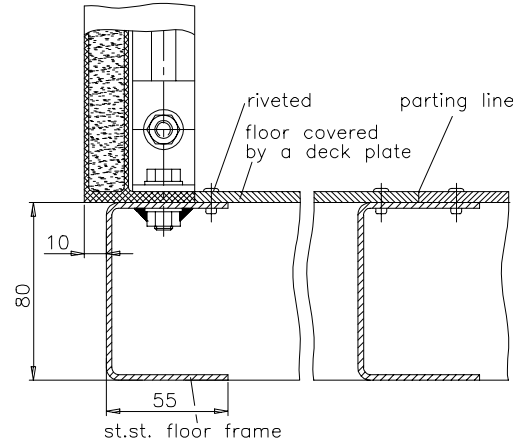
Design D



Design E



Design F



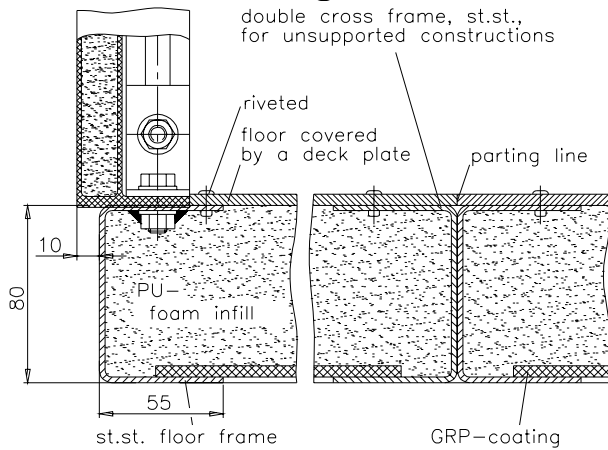
Direction to the supporting construction:

Design A/ B/ C: concrete foundation slab necessary

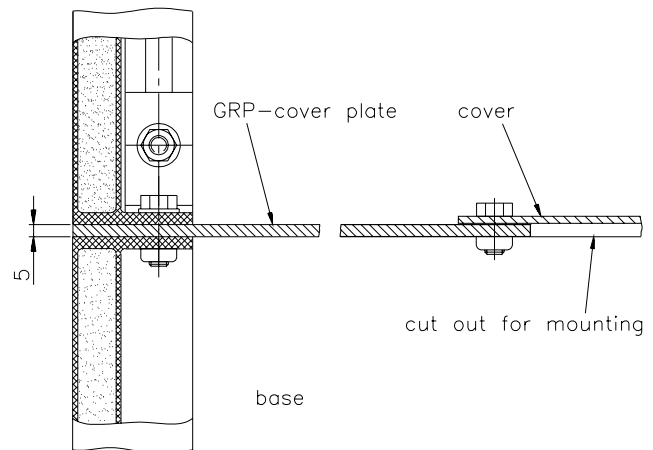
Design D/ E: floor frame must be completely supported
Design F: assembling on foundation slide rails

Floor versions for CLASSIC series

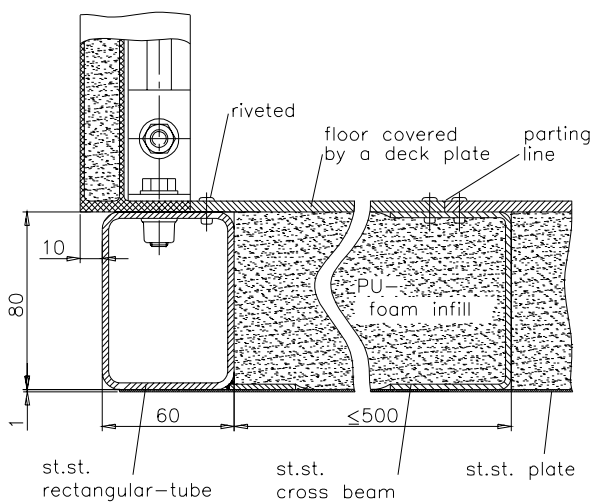
Design G



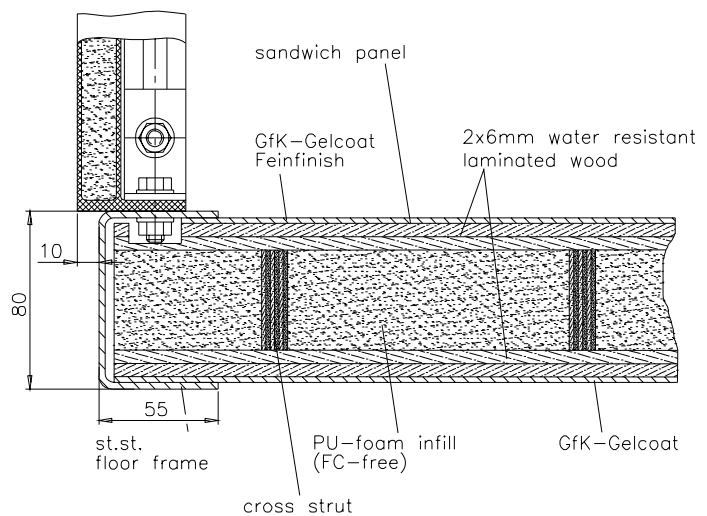
Design H



Design I



Design K



Direction to the supporting construction:

Design G/ I/ K: assembling on foundation slide rails

Design H: mounting on INTERTEC-base, h=1000mm, for sinking