

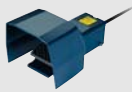


**Foot Switches**  
**Series EEx GF, EEx GF 2,**  
**EEx GF 3, EEx GFS, EEx GFS 2**  
**and EEx GFS 3**

- Max. 2 contacts per pedal
- Metal enclosure
- With up to 3 pedals
- With or without protective shield
- High level of stability
- Low pedal height
- Wide opening in shield
- Pre-wired cable 3 m long
- Available with special finish in RAL colour tones

STAHL

Range of application: Ex foot switches are used, amongst other things, in good lifts and service elevators to open the cabin doors. Using these switches, operators do not have to lay down carried goods or materials to open the lift cabin door and load the lift cabin. Design and mode of operation: The Ex foot switches from the EEx GF range are available with slow or snap action. They provide protection class IP 65.

Zones 1 & 2, 21 & 22

Selection Table				
Version				Ordering code
Foot switches acc. to specification				4646790
Add. to Ordering Code				
Version	Switching system	Contacts	Protective shield	Ordering code
 <p>Foot switches, single-pedal Series EEx GF and EEx GFS</p> <p>04985E00</p>	slow action	1 NO 1 NC	without protective shield	EEx GF 1Ö/1S
			with protective shield	EEx GFS 1Ö/1S
	snap action	1 Change-over contact	without protective shield	EEx GFM 1W
			with protective shield	EEx GFSM 1W
 <p>Foot switches, double-pedal Series EEx GF 2 and EEx GFS 2</p> <p>05379E00</p>	slow action	2 NO 2 NC	without protective shield	EEx GF 2 1ÖS/1ÖS
			with protective shield	EEx GFS 2 1ÖS/1ÖS
	snap action	2 Change-over contacts	without protective shield	EEx GFM 2 1W/1W
			with protective shield	EEx GFSM 2 1W/1W
 <p>Foot switches, triple-pedal Series EEx GF 3 and EEx GFS 3</p> <p>04957E00</p>	slow action	3 NO 3 NC	without protective shield	EEx GF 3 1ÖS/1ÖS/1ÖS
			with protective shield	EEx GFS 3 1ÖS/1ÖS/1ÖS
	snap action	3 Change-over contacts	without protective shield	EEx GFM 3 1W/1W/1W
			with protective shield	EEx GFSM 3 1W/1W/1W
Note	Other contact configurations available on enquiry (max. 2 contacts per pedal)			

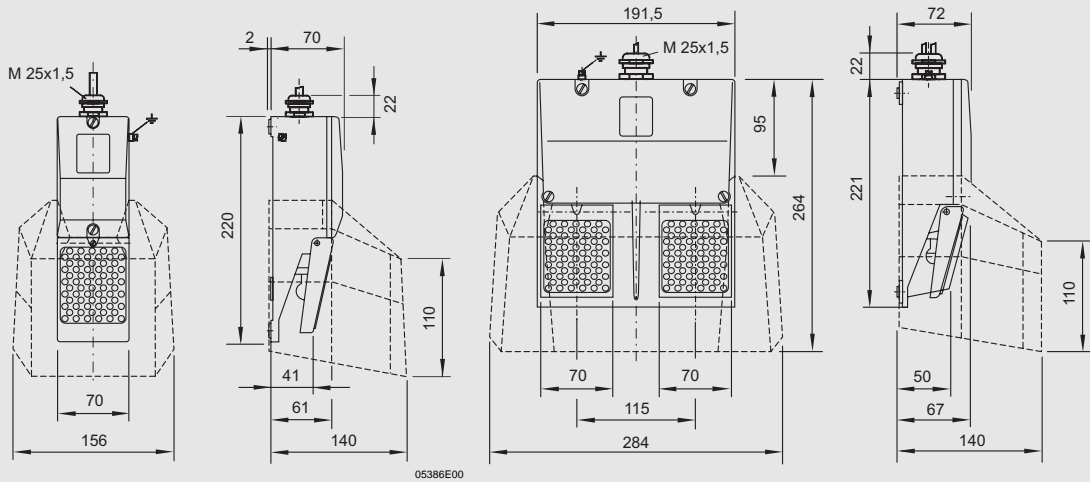
Technical Data	
Explosion protection	<p>II 2 G EEx d IIC T6</p> <p>II 2 D IP65 T80 °C</p>
Certificates	<p>EEx GF: PTB 03 ATEX 1070 X*</p> <p>EEx GFM: PTB 03 ATEX 1069 X*</p> <p>* referring to the switch insert</p>
Switch element	EEx 14; EExM 14
Material	
Housing	<p>EEx GF; EEx GFS EEx GF 2; EEx GFS 2 Aluminium die-cast, enamel finish</p> <p>EEx GF 3; EEx GFS 3 Aluminium cast, enamel finish</p>
Cover	Glass-fibre reinforced thermoplastic
Pedal	Aluminium die-cast, enamel finish
Protective shield	Same like enclosure
Degree of protection	IP 65 to IEC/EN 60529
Utilisation category	AC-15; DC-13
Rated working current	<p>250 V AC: 6 A</p> <p>230 V DC: 0.25 A</p>
Back-up fuse	6 A gL/gG D-fuse
Ambient temperature	- 20 °C ... + 65 °C
Mechanical life	> 1 million operations



## Foot switches

### Series EEx GF, EEx GF 2, EEx GF 3, EEx GFS, EEx GFS 2 and EEx GFS 3

Dimension drawings (all dimensions in mm) - subject to alterations

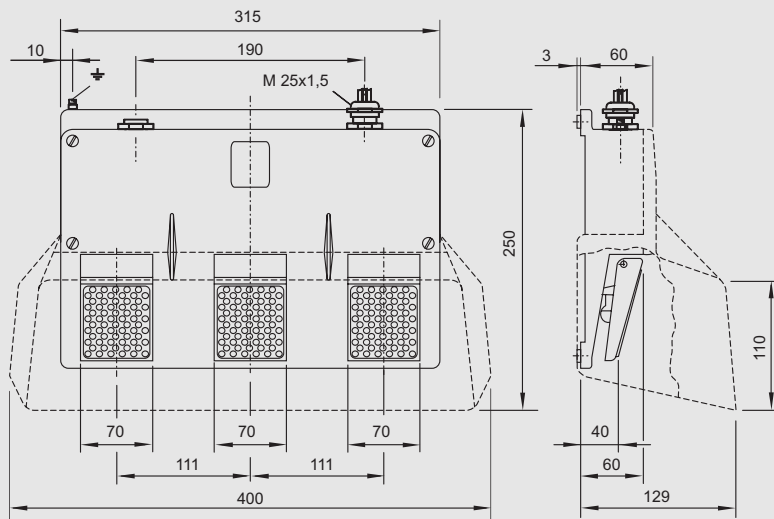


05386E00

05387E00

**EEx GF and EEx GFS**  
Foot switches, single-pedal

**EEx GF 2 and EEx GFS 2**  
Foot switches, double-pedal



05389E00

**EEx GF 3 and EEx GFS 3**  
Foot switches, triple-pedal

We reserve the right to make alterations to the technical data, weights, dimensions, designs and products available without notice. The illustrations cannot be considered binding.