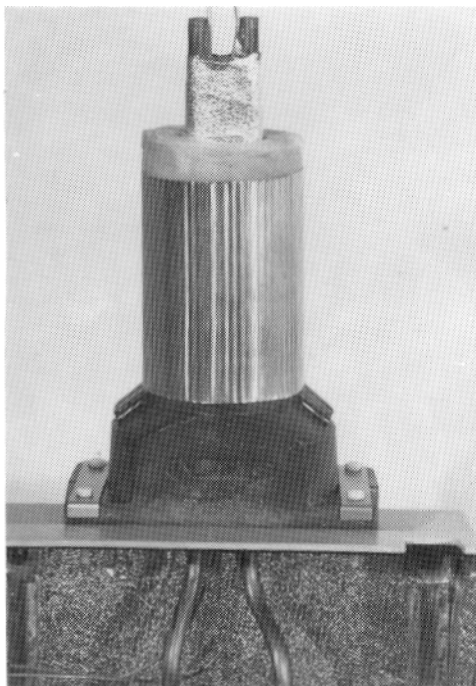


ISOPASS 1016, 1018 and 1320

The ISOPASS 1016, 1018 and 1320 insulation adapter is used to prevent heat losses and is installed at the point where the impulse lines enter the enclosure. This prevents freezing of the impulse lines at this critical point by allowing movement between the insulated impulse lines and the enclosure.

The two half-shells of hard polyurethane foam are placed around the impulse lines, the thin top covering of the adapter is cut out to fit the



diameter of the pipe, and the two halves are held together with the stainless steel clamps supplied. The bottom flange of the ISOPASS is coated with sealing compound and the complete assembly, together with the 4 bolts and 2 fastening straps provided, is attached to the enclosure.

The insulator can then link up with the conical stub of the ISOPASS.

Types available:

ISOPASS 1016, 1018 or 1320 in hard polyurethane foam in two sections (with tongue and groove)

2 clamps of stainless steel spring wire

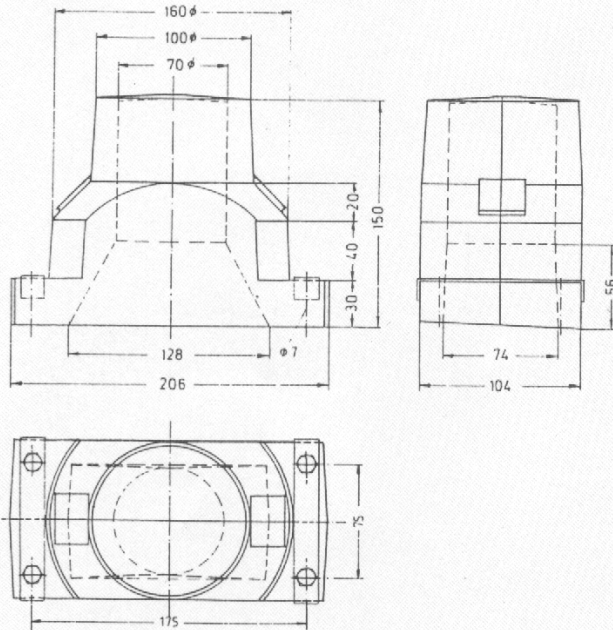
2 straps of stainless steel sheet

4 plastic bolts with nuts

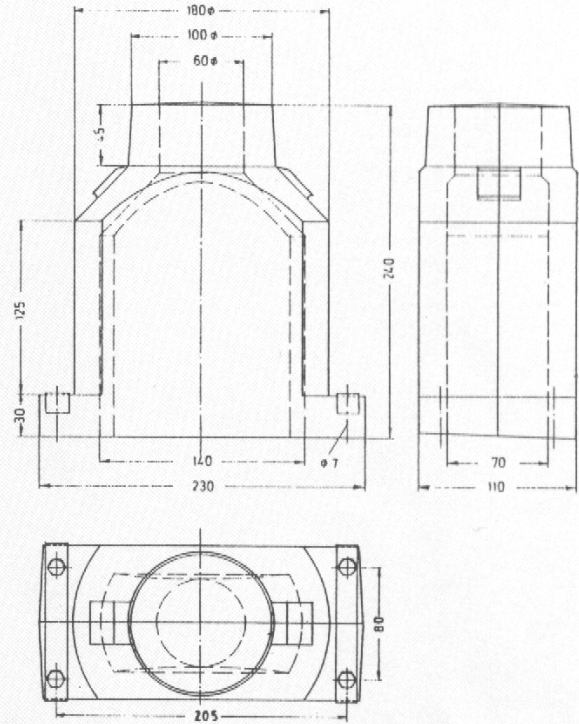
ISOPASS 1016, 1018 and 1320

Dimensions

Type 1016



Type 1018



Type 1320

