



*Limit Monitor*

**Description**

The limit value transmitters of Types 07-31.../... are deployed in conjunction with pneumatic actuators on valves and fittings. They serve to signal the "open/closed" status of a fitting. This end position is communicated via two (max. six) pressure-proof enclosed limit switches with the appropriate connection and mounting elements, or by intrinsically safe initiators according to NAMUR.

To ensure mechanical adaptability to the pneumatic actuators, we supply 4 consoles according to VDI/VDE 3845.

The limit value transmitters as well as their components comply with the relevant EN 50014, 50018, EN 50019, EN 50028, EN 50281-1-1 and/or EN 50020 norms and have been developed, manufactured and examined in accordance with EN ISO9001. The limit value transmitters are also suitable for connecting intrinsically safe circuits.

**Selection chart for standard polyester limit value transmitters**

	<b>Polyester enclosure black (220 x 120 x 90 mm) for Zone 1 + 2 and 21 + 22</b>	<b>Console (dimensions in mm)</b>			<b>Order no.</b>
		<b>A</b>	<b>B</b>	<b>H</b>	
<b>EEx ed</b> Bild 1	Console VDI/VDE 3845	130	50	75	<b>07-31B1-2209/9004</b> <b>07-31B1-2209/9003</b> <b>07-31B1-2209/9002</b> <b>07-31B1-2209/9001</b> <b>07-31B1-2209/9007</b>
	Console VDI/VDE 3845	130	30	55	
	Console VDI/VDE 3845	80	30	55	
	Console VDI/VDE 3845	80	20	45	
	Console with connection dimensions ISO 5211 F05	-	-	-	
<b>Polyester enclosure black (110 x 75 x 55 mm) for Zone 1 + 2 and 21 + 22</b>					
<b>EEx ed</b> Bild 2	Console VDI/VDE 3845	130	50	75	<b>07-31B1-1105/9005</b> <b>07-31B1-1105/9004</b> <b>07-31B1-1105/9003</b> <b>07-31B1-1105/9002</b> <b>07-31B1-1105/9001</b>
	Console VDI/VDE 3845	130	30	55	
	Console VDI/VDE 3845	80	30	55	
	Console VDI/VDE 3845	80	20	45	
	Console with connection dimensions ISO 5211 F05	-	-	-	
<b>Polyester enclosure grey (110 x 75 x 55 mm) only for Zone 1 + 2</b>					
	Console VDI/VDE 3845	130	50	75	<b>07-31C1-1105/9005</b> <b>07-31C1-1105/9004</b> <b>07-31C1-1105/9003</b> <b>07-31C1-1105/9002</b> <b>07-31C1-1105/9001</b>
	Console VDI/VDE 3845	130	30	55	
	Console VDI/VDE 3845	80	30	55	
	Console VDI/VDE 3845	80	20	45	
	Console with connection dimensions ISO 5211 F05	-	-	-	
<b>Polyester enclosure black (110 x 75 x 55 mm) for Zone 1 + 2 and 21 + 22</b>					
<b>EEx i</b> Bild 3	Console VDI/VDE 3845	130	50	75	<b>07-31B2-1105/9005</b> <b>07-31B2-1105/9004</b> <b>07-31B2-1105/9003</b> <b>07-31B2-1105/9002</b> <b>07-31B2-1105/9001</b>
	Console VDI/VDE 3845	130	30	55	
	Console VDI/VDE 3845	80	30	55	
	Console VDI/VDE 3845	80	20	45	
	Console with connection dimensions ISO 5211 F05	-	-	-	
<b>Polyester enclosure grey (110 x 75 x 55 mm) only for zones 1 + 2</b>					
	Console VDI/VDE 3845	130	50	75	<b>07-31C2-1105/9005</b> <b>07-31C2-1105/9004</b> <b>07-31C2-1105/9003</b> <b>07-31C2-1105/9002</b> <b>07-31C2-1105/9001</b>
	Console VDI/VDE 3845	130	30	55	
	Console VDI/VDE 3845	80	30	55	
	Console VDI/VDE 3845	80	20	45	
	Console with connection dimensions ISO 5211 F05	-	-	-	



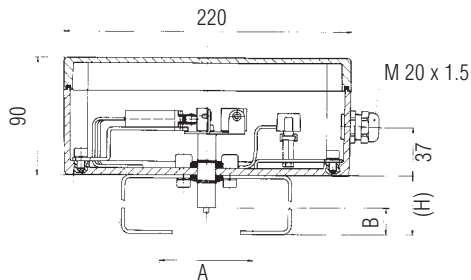
Explosion protection

Ex protection type (max.) dependent on the installed parts
II 2GD EEx edm ia resp. ib IIC T6, T5 resp. T4
IP 6x T 80 °C resp. T 95 °C
Certification IExU02ATEX1126

Technical data

Protection class Enclosure IP 65 to EN 60529 and IEC 60529
Material Type 07-31A cast aluminium AISi 12
Type 07-31B black polyester
Type 07-31C grey polyester R0 >10^12 Ohm
Type 07-31D stainless steel
Mounting console and connection dimensions to ISO 5211 (DIN 3337) resp. VDI/VDE 3845
Connection Ex glands M20 x 1.5 resp. M16 x 1.5

Bild 1



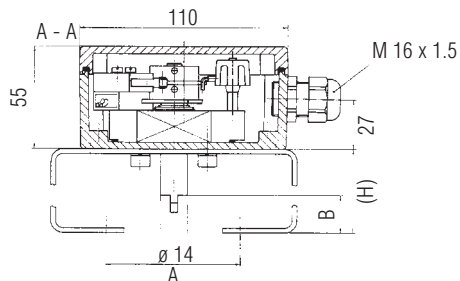
Polyester enclosure 220 x 120 x 90 mm

Built-in 2 microswitches
Ex protection type EEx d IIC
Switching function changeover contact

Cable connection via EEx e modular terminals. An EEx e cable gland is provided for the cable connection M 20 x 1.5 (6 to 12).

The version with enclosure dimensions 220 x 120 x 90 mm optionally provides additional terminals for the connection of a magnetic valve.

Bild 2

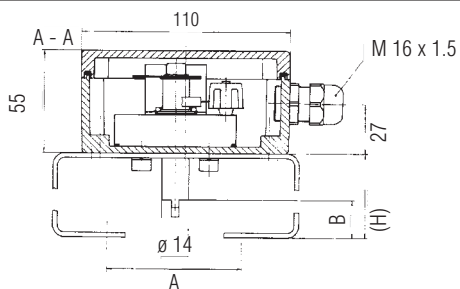


Polyester enclosure 110 x 75 x 55 mm

Built-in 2 micro-switches
Ex protection type EEx d IIC
Switching function NO contact

The cable is connected to EEx e-rail-mounted terminals. An EEx e-cable gland is provided to insert the cable M16 x 1.5 (5 to 10).

Bild 3



Polyester enclosur 110 x 75 x 55 mm

Built-in 2 slit initiators non-contact, inductive according to DIN 19234 NAMUR

The cable is connected to EEx i-rail-mounted terminals. An EEx i-cable gland is provided to insert the cable M16 x 1.5 (5 to 10).