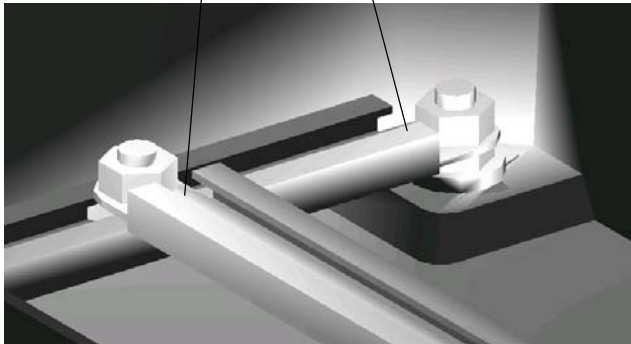


MULTIBOX - Mounting Rails

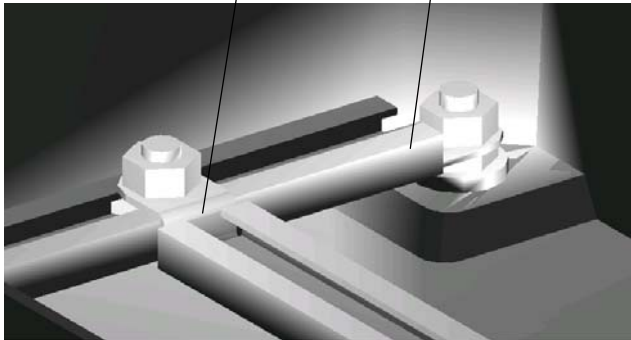
The INTERTEC C-rail mounting and installation system affords strong and timesaving equipment installation. The unique cross wise array of the four mounting rails (MS) can be steplessly adjusted to accommodate any mounting dimensions. Horizontal rails (Q or QS) are supplied including 2 hammer head bolts M10x15 and nuts.

1 Installation variations

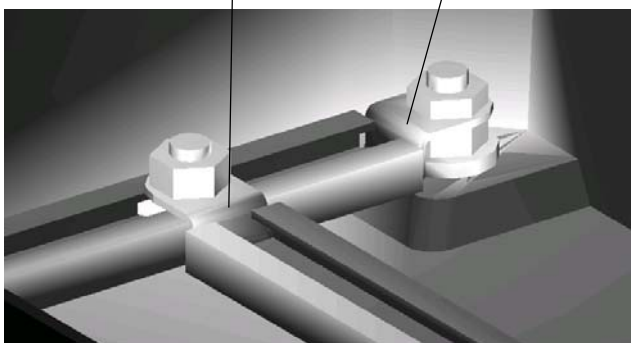
1.1 Form A – flat MS on flat MS



1.2 Form B – swaged MS on flat MS

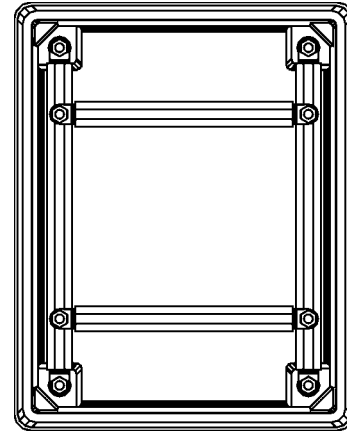


1.3 Form C – swaged MS on swaged MS



2 Arrangement of mounting rails

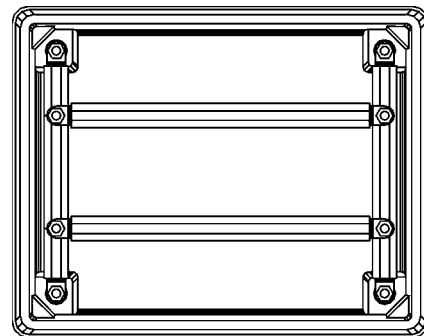
2.1 in vertically mounted enclosure



required mounting rails

for MULTIBOX	Form A	Form B	Form C
25, 48	2x MS50L 2x MS50QS	2x MS50L 2x MS50Q	2x MS50LS 2x MS50Q
60, 70, 100	2x MS100L 2x MS100QS	2x MS100L 2x MS100Q	2x MS100LS 2x MS100Q
80, 150, 170	2x MS150L 2x MS150QS	2x MS150L 2x MS150Q	2x MS150LS 2x MS150Q
non insulated	X	Standard	--
insulated aSS--	X	Standard	X

2.2 in horizontally mounted enclosure



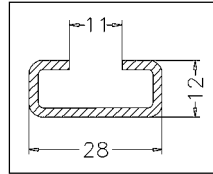
required mounting rails

for MULTIBOX	Form A	Form B	Form C
25, 48	2x MS50QS 2x MS50L	2x MS50QS 2x MS50LS	2x MS50Q 2x MS50LS
60, 70, 100	2x MS100QS 2x MS100L	2x MS100QS 2x MS100LS	2x MS100Q 2x MS100LS
80, 150, 170	2x MS150QS 2x MS150L	2x MS150QS 2x MS150LS	2x MS150Q 2x MS150LS
non insulated	X	Standard	--
insulated aSS--	X	Standard	X

MULTIBOX - Mounting Rails

3 Mounting rails

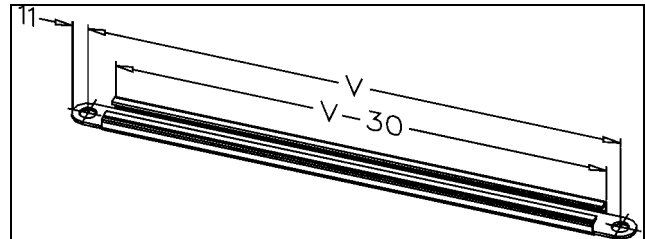
Mounting rails: C-profile with holes $\varnothing 12\text{mm}$ at the ends



for MULTI-BOX	carbon steel, hot dipped galva-nised	weight (kg)	stainless steel	weight (kg)	V
25 48	MS 50L	0,31	MS 50LVA	0,21	380
	MS 50LS	0,32	MS 50LSVA	0,23	
	MS 50Q	0,23	MS 50QVA	0,16	280
	MS 50QS	0,23	MS 50QSVA	0,16	
60 70 100	MS 100L	0,45	MS 100LVA	0,31	540
	MS 100LS	0,46	MS 100LSVA	0,31	
	MS 100Q	0,28	MS 100QVA	0,20	340
	MS 100QS	0,28	MS 100QSVA	0,19	
80 150 170	MS 150L	0,52	MS 150LVA	0,38	630
	MS 150LS	0,53	MS 150LSVA	0,37	
	MS 150Q	0,36	MS 150QVA	0,24	400
	MS 150QS	0,33	MS 150QSVA	0,23	

3.1 flat mounting rails

- „MS ...L..“ vertical rail
- „MS ...QS..“ horizontal rail, special design



3.2 swaged mounting rails

- „MS ...LS..“ vertical rail, special design
- „MS ...Q..“ horizontal rail

