

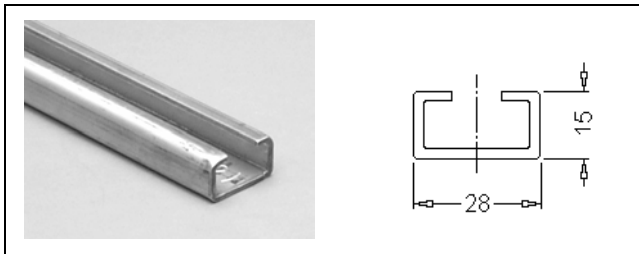
Mounting Rails in the CLASSIC Cabinet Series

1 General features

Mounting rails are an integral part of the INTERTEC cabinet. Every CLASSIC cabinet, including the standard one, has at least 6 vertical rails (28/15 series dimensions) made of anodised aluminium that extend through the entire inside height. This very flexible mounting rail system makes it possible to reach and use every point in the cabinet.

All rail designs described below are available in the following materials:

- ◆ Galvanised steel (standard) Order.code: Galv.
- ◆ Anodised aluminium Order.code: Alum.
- ◆ Stainless steel Order.code: S.S.

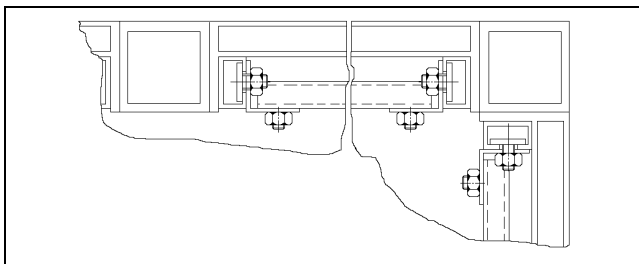
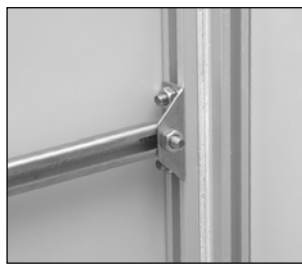


2 Available designs

A common feature of all the following mounting rails is that the height is infinitely adjustable.

2.1.1 Mounting rails for individual wall panels

This design is available for every width of wall panel (400/ 600/ 800/ 1000 mm). The mounting rail kit comes complete with 2 brackets and 6 T-bolts for horizontal attachment to the vertical (standard) C-rails.

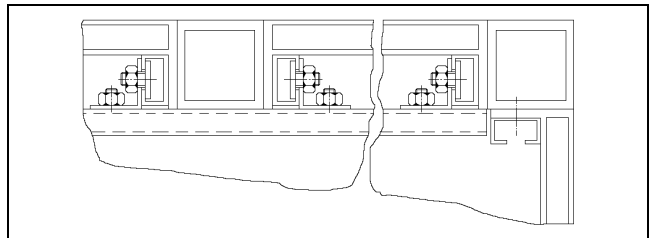


Ordering code: SMSS600 S.S.
 Mounting rail for 600 mm wide wall panel, in stainless steel (Mat. No. 1.4301)

2.2 Continuous mounting rails ...

2.2.1 ... fixed installation

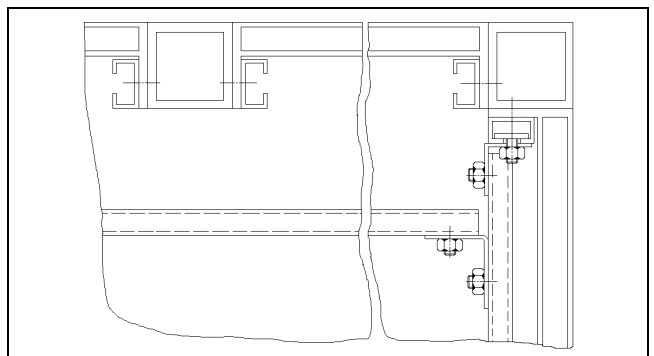
These mounting rails are fixed across the entire width of the walls and posts, without any joints at the posts. All the widths and depths of the INTERTEC CLASSIC Cabinets are possible. Supplied complete with brackets and T-bolts, the rails are designed for horizontal mounting to the vertical (standard) C-rails.



Ordering code: SMSS1250 Galv.
 Mounting rail, 1250 mm long (length of mounting rail = width of cabinet 1350 mm minus 100 mm), in galvanised steel

2.2.2 ... depth-adjustable

A feature of this installation is that, by using a special mounting bracket, the mounting rails are infinitely depth adjustable.

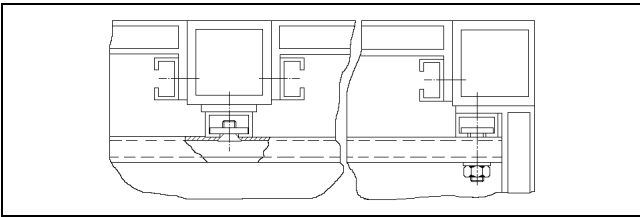


Ordering code: SMSS1250T Galv.
 Mounting rail, 1250 mm long (length of mounting rail = width of cabinet 1350 mm minus 100 mm), depth-adjustable, in galvanised steel

Mounting Rails in the CLASSIC Cabinet Series

2.3 Continuous mounting rails in special length

This mounting rail extends across the maximum width of the rear wall. As compared to the example shown before, the length of the rail is 1300 mm (cabinet width minus 50 mm). For this application, it is essential to install vertical C-rails on the support posts (as described in 2.4). In addition, hex. head bolts are required.

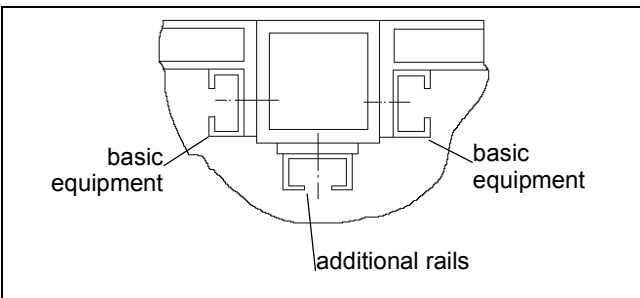


Ordering code: SMSS1300 Alum

Mounting rails, 1300 mm long (length of mounting rail = width of cabinet 1350 mm minus 50 mm), in anodised aluminium

2.4 Vertical mounting rails

For cabinet widths exceeding 1350 mm, additional vertical C-rails can be installed on the support posts for mounting purposes. The height or length of the rails corresponds with the clear height of the cabinet.



Ordering code: SM-BR210 Alum

Mounting rail for cabinets with 2000 mm clear height (series 210), in anodised aluminium (standard)

3 System accessories: mounting brackets

Available in galvanised steel (standard) or in stainless steel (Mat. No. 1.4301)



- Rail end bracket with 3 drilled holes
Ordering code: SMWS-MWS
- Rail end bracket with 3 drilled holes and 3 T-bolts M10x15 incl. nuts
Ordering code: SMWS-MWSHK

A variety of T-bolts suited for the mounting rail systems described above is listed in our Enclosure Price List.

Please note:

For light-duty installations at the cabinet, various reinforcements of the GRP parts are possible:

- ◆ Laminated reinforcements
- ◆ Glued reinforcements
- ◆ Rigid foam insert instead of PU-foam

For example, commercially available junction boxes or surface switch/socket combinations can be installed on these reinforcements by using sheet metal screws. The reinforcements can be made on all panels (wall panels, doors and roofs) according to customers' specific requirements of size and location.