



06351E00

Push Button Series TEF 1107

- For use in
 - Marine application
 - Safe area
- Switch for light signals, horns or machines

STAHL

Safe Area

Selection Table

Version	Description	Colour	Ordering code	Weight kg
Push button Series TEF 1107	1 normally open + 1 normally closed, 4 A, 250 V AC	red	TEF1107201	0,600
		green	TEF1107200	0,600

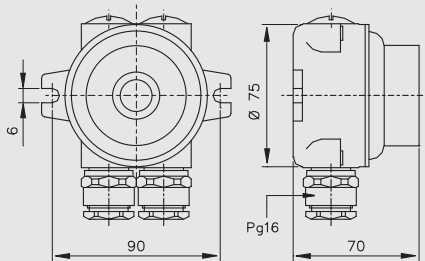
Technical Data

Certificates	®GR. 21.02.280
Enclosure material	Brass
Rated voltage	250 V AC
Rated current	4 A
Contact	1 normally open + 1 normally closed
Cable entries	2 x Pg 16 cable glands 2 x Pg 16 stopping plugs
Degree of protection	IP 56

Accessories and Spare Parts

Designation	Description	Ordering code	Weight kg
Cable gland	Pg 16	510100010070	0,050
Stopping plug	Pg 16	510100010080	0,010

Dimension drawings (all dimensions in mm) - subject to alterations



06337E00

We reserve the right to make alterations to the technical data, weights, dimensions, designs and products available without notice. The illustrations cannot be considered binding.

